



The Open Dentistry Journal

Content list available at: <https://opendentistryjournal.com>



RESEARCH ARTICLE

Antifungal Effectiveness between Tricalcium Silicate-White Portland Cements Added Bi_2O_3 and Mineral Trioxide Aggregate Against *Candida albicans*

Denny Nurdin¹, Maulidia Indah Sari^{2,3}, Rahmi Alma Farah Adang¹, Indra Primathena¹ and Arief Cahyanto^{4,5,*}

¹Department of Conservative Dentistry, Faculty of Dentistry, Universitas Padjadjaran, Bandung, Indonesia

²Graduate School of Specialist Program in Endodontics, Faculty of Dentistry, Universitas Padjadjaran, Bandung, Indonesia

³Department of Conservative Dentistry, Faculty of Dentistry, Universitas Syiah Kuala, Banda Aceh, Indonesia

⁴Department of Dental Materials Science and Technology, Faculty of Dentistry, Universitas Padjadjaran, Bandung, Indonesia

⁵Oral Biomaterials Study Center, Faculty of Dentistry, Universitas Padjadjaran, Bandung, Indonesia

Abstract:

Background

Candida albicans is the most dominant fungus found in root canal reinfection cases. This microorganism can withstand extreme pH, low oxygen levels, lack of nutrients, and penetrate the dentinal tubules so that it can resist the intracanal medicament. Root canal cement helps prevent microorganisms and causing root canal reinfection. MTA is one of the root canals cement which is widely used and has an excellent antifungal activity, but it is less beneficial economically. Tricalcium silicate-white Portland cement (WPC) has a similar main composition as MTA, except there is no Bi_2O_3 content that functions as a radiopacifier.

Objectives:

To fabricate a mixture of tricalcium silicate-WPC with Bi_2O_3 through a simple solution method and investigate antifungal activity's effectiveness between tricalcium silicate-WPC added Bi_2O_3 and MTA to *C. albicans*.

Materials and Methods:

The 80 g of tricalcium silicate-WPC was mixed with 20 g of Bi_2O_3 through the simple solution method using 99.9% isopropanol as a solution. This sample solution is stirred until homogeneous, then centrifuged. The precipitate was dried until a dry powder was obtained. The powder was analyzed using X-Ray fluorescence spectrometry to identify its chemical composition and concentration. A total of 30 samples were divided into two experimental groups of tricalcium silicate-WPC added Bi_2O_3 and ProRoot MTA. The vials, which contain cement and *C. albicans*, respectively, were incubated at 37°C for 24 hours and diluted to obtain a suspension 10^4 , 10^6 (0.5 in McFarland's nephelometer) and then inoculated with sterile cotton swabs onto Saboroud Dextrose Agar Plates. The plates were incubated at 37°C for 24 hours. The measurement of colony number of *C. albicans* was counted by colony counter (CFU/ml).

Results:

The Bi_2O_3 was revealed in tricalcium silicate-WPC based on XRF characterization, and the antifungal test showed that both materials were effective against *C. albicans*. There was no statistically significant difference in the number of *C. albicans* colonies between tricalcium-WPC added Bi_2O_3 and MTA ($p > 0.05$).

Conclusion:

The mixture of Bi_2O_3 in tricalcium silicate-WPC was successfully fabricated through a simple solution method, and both samples were effective against the *C. albicans*.

Keywords: Tricalcium silicate-white portland cement, Bi_2O_3 , MTA, *Candida albicans*, Chemical composition, Colony counter (CFU/ml).

Article History

Received: August 18, 2020

Revised: December 02, 2020

Accepted: December 16, 2020

1. INTRODUCTION

The failure factor in endodontic treatment is caused by

persistent microorganisms in the root canal [1 - 7]. Fungi are microorganisms that can be found in secondary infections with

an incidence of between 2% and 40% other than bacteria. The results showed that *Candida albicans* is the most dominant type of fungi found in endodontic re-treatment [6, 7]. *C. albicans* is a fungus that can be able to withstand extreme pH, low oxygen levels, and lack of food sources that make microorganisms resistant in the root canal [8]. These microorganisms penetrate the dentinal tubules and interact with other microorganisms to form biofilm complexes and cause reinfection in the root canals [9].

Sealer is an essential material in the stage of filling the root canal as a filling material between guttapercha and the root canal walls and filling gaps and irregularities in the root canal [10, 11]. The ideal cement must-have antimicrobial activity to suppress the remaining microorganisms in the root canal [12 - 14]. Mahmoud Torabinejad first developed Mineral Trioxide Aggregate (MTA) in 1993 with the main components of tricalcium silicate, tricalcium aluminate, tetra calcium aluminophosphate, and Bi_2O_3 . The high alkalinity of MTA can inhibit the growth of microorganisms. Several studies have shown the antibacterial effect of MTA on *Enterococcus faecalis* and *C. albicans* [15 - 20]. MTA is still not widely used because the price is relatively high. Previous research showed the similarity of biocompatibility, sealing ability, and dimensional stability [21 - 23]. Tricalcium silicate Portland cement produced by Indocement, Ltd., Cirebon, West Java, consists of grey and White Portland Cement (WPC). Tricalcium silicate-WPC has the same composition as MTA, which contains calcium aluminate and calcium sulfate with lower iron content without Bi_2O_3 [24, 25]. Bismuth oxide (Bi_2O_3) is a radiopaque material added to a root canal filling material to be seen radiographically. Based on the study results, Guerreiro *et al.* showed that the addition of Bi_2O_3 to Portland cement did not change the pH and the antimicrobial effect [26 - 29].

This study aims to fabricate a mixture of tricalcium silicate-WPC with Bi_2O_3 through a simple solution method and assess the difference in antifungal activity effectiveness between tricalcium silicate-WPC added Bi_2O_3 and MTA against *C. albicans*.

2. MATERIALS AND METHODS

2.1. Synthesis of Tricalcium Silicate-WPC Added Bi_2O_3

At this stage, the mixing of tricalcium silicate-WPC (Indocement Ltd, Cirebon, Indonesia) was carried out with Bi_2O_3 as followed: tricalcium silicate-WPC 80 g mixed with Bi_2O_3 20 g was dissolved using 99.9% isopropanol as a solution. This sample solution is stirred using a magnetic stirrer for 30 minutes until homogeneous, then centrifuged. The precipitate was dried using a vacuum drying oven for 60 minutes until a dry powder was obtained.

2.2. Characterization X-Ray Fluorescence (XRF)

The mixture of tricalcium silicate -WPC added Bi_2O_3 was

* Address correspondence to this author at the Department of Dental Materials Science and Technology, Faculty of Dentistry, Universitas Padjadjaran, Jalan Sekeloa Selatan 1 Bandung, 40134, West Java, Indonesia; Tel: +62-22-2504985; E-mail: arief.cahyanto@fkg.unpad.ac.id

analyzed using X-Ray Fluorescence spectrometry (ED-XRF Rigaku Nex CG, The Woodlands, USA) to identify their chemical composition and concentration.

2.3. Antifungal Test

In this study, tricalcium silicate-WPC (Indocement Ltd, Cirebon, Indonesia) added Bi_2O_3 and ProRoot MTA (Dentsply Sirona, Charlotte, USA) were employed. *C. albicans* -ATCC 10231 provided by Microbiology Laboratory of Pharmacy School, ITB, Bandung. A total of 30 samples were divided into two experimental groups of tricalcium silicate-WPC added Bi_2O_3 and ProRoot MTA.

Tricalcium silicate-WPC added Bi_2O_3 (0.5 g) inserted into a vial of *C. albicans* suspension (5 ml) and gently shaken to ensure direct contact between fungi and cement as well as ProRoot MTA. The vials were incubated at 37°C for 24 hours and diluted to obtain a suspension 10^4 , 10^6 (0.5 in McFarland's nephelometer) and then inoculated with sterile cotton swabs onto Saboroud Dextrose Agar Plates. The plates were incubated at 37°C for 24 hours. The measurement of colony number of *C. albicans* was counted by colony counter (CFU/ml).

3. RESULTS

3.1. Composition of Tricalcium Silicate-WPC Added Bi_2O_3

The chemical compositions of the tricalcium silicate-WPC added Bi_2O_3 by XRF are shown in Table 1. The main chemical compounds of tricalcium silicate-WPC added Bi_2O_3 were Calcium (Ca) 56.7%, Silica (Si) 14.6%, Bismuth (Bi) 10.6%, Magnesium (Mg) 10.1%, and Aluminum (Al) 5.2% as seen in (Fig. 1). Other minerals were detected under 1% called trace elements. Compared with ProRoot MTA, the amount of Calcium was relatively higher than ProRoot MTA, as well as Aluminum and Magnesium. Tricalcium silicate-WPC added Bi_2O_3 contained a small amount of silica (Si) than ProRoot MTA. Metal elements were found in both materials, tricalcium silicate-WPC added Bi_2O_3 and ProRoot MTA at different concentrations. Tricalcium silicate-WPC added Bi_2O_3 contained a lower amount of iron (Fe) than ProRoot MTA. Zirconium (Zr) was found only in tricalcium silicate-WPC added Bi_2O_3 at a low concentration.

3.2. Antifungal Activity

Antifungal activity was assessed with the measurement of colony number *C. albicans* (CFU/ml) used colony counter, as present in Table 2 and the mean number of CFU/ml for each material against *C. albicans* is shown in Table 3. The growth of *C. albicans* colonies before and after applying tricalcium silicate-WPC added Bi_2O_3 and ProRoot MTA incubated for 24 hours is shown in (Figs. 2-4). Among the tested materials, tricalcium silicate-WPC added Bi_2O_3 and ProRoot MTA present a similar result. There was no statistically significant difference between the fungi count of the Tricalcium silicate-WPC added Bi_2O_3 and ProRoot MTA after 24 hours incubated since $p > 0.05$, as shown in Table 4.

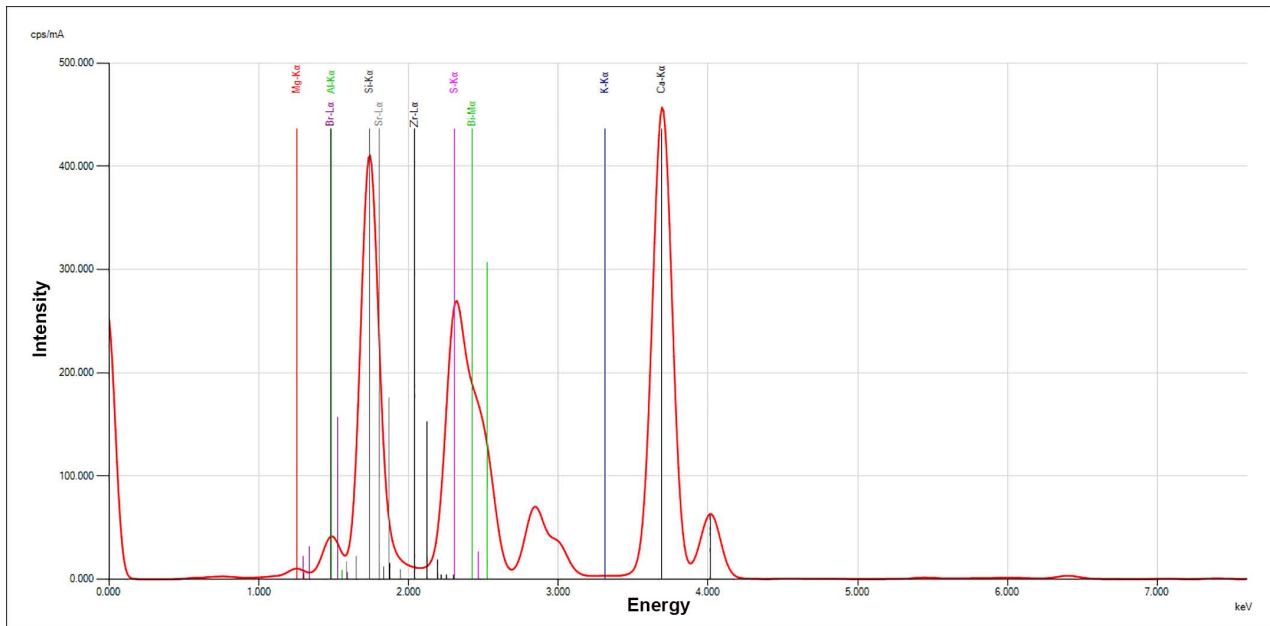


Fig. (1). XRF peak of tricalcium silicate-WPC added Bi₂O₃ sample.

Table 1. Chemical compositions of Tricalcium silicate-WPC added Bi₂O₃ and ProRoot MTA based on X-Ray Fluorescence Spectrometer (XRF).

Minerals	White Portland Cement-Bi ₂ O ₃ (mass%)	ProRoot MTA[26, 27](mass%)
Iron (Fe)	0.2	0.38
Magnesium (Mg)	10.1	5.16
Potassium (K)	0.3	0.45
Calcium (Ca)	56.7	54.6
Titanium (Ti)	0.05	0.09
Chrom (Cr)	0.003	0.003
Aluminum (Al)	5.2	1.19
Zirconium (Zr)	0.7	-
Sulphur (S)	1.0	1.96
Silica (Si)	14.6	17.6
Bismuth (Bi)	10.6	14.46
Strontium (Sr)	0.3	0.22

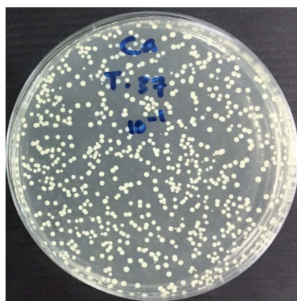


Fig. (2). The growth of *Candida albicans* colonies before the application of Tricalcium silicate-WPC added Bi₂O₃ and ProRoot MTA.

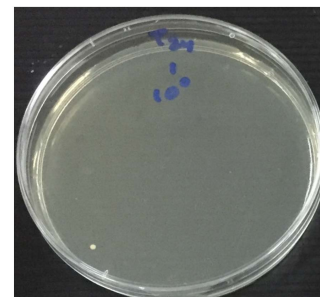


Fig. (3). The growth of *Candida albicans* colonies after application of Tricalcium silicate-WPC added Bi₂O₃ incubated for 24 hours.



Fig. (4). The growth of *Candida albicans* colonies after the application of ProRoot MTA incubated for 24 hours.

Table 2. The *Candida albicans* colonies number after application with Tricalcium silicate-WPC added Bi₂O₃ and ProRoot MTA for 24 hours.

Tricalcium silicate-WPC added Bi ₂ O ₃ (CFU/ml)	ProRoot MTA (CFU/ml)
1	2
1	0
0	1
2	1
2	0
0	1
0	1
0	0
1	0
1	1
0	1
1	0
0	1
0	0
1	0

Table 3. Means of antifungal effectiveness of Tricalcium silicate-WPC added Bi₂O₃ and ProRoot MTA for 24 hours.

-	Means number of colonies <i>Candida albicans</i> (CFU/ml)
Tricalcium silicate-WPC added Bi ₂ O ₃	0.6
ProRoot MTA	0.6

Table 4. An Independent t-test between a group of Tricalcium silicate-WPC added Bi₂O₃ and ProRoot MTA before and after 24 hours.

-	Before 24 h	After 24 h	
		Tricalcium silicate-WPC added Bi ₂ O ₃	ProRoot MTA
Averages	88 x 10 ⁵	0.667	0.600
Standard deviation	990.430	0.724	0.632
n	15	15	15
p-value		0.067*	

*p-value > 0.05.

4. DISCUSSION

Microorganisms are the main factors causing endodontic treatment failure [1 - 7]. *C. albicans* are the most dominant fungi found in the root canals and can cause endodontic treatment failures [8, 9]. *C. albicans* have properties that survive in the root canal after biomechanical preparation and root canal medication [10, 14]. Therefore, the obturation is an essential stage so that a root canal cement with antifungal activity and good sealing ability is needed to prevent microorganisms from entering and causing infection after root canal treatment is completed [15, 16]. MTA is one of the root canals cement widely used and has some ideal properties as a sealer, one of which is an excellent antifungal activity [17 - 20].

MTA's main content is tricalcium silicate, dicalcium silicate, tricalcium aluminate, and tetra calcium aluminoferrite, also found in Portland cement [20 - 25]. The similarity of the main content has been studied to provide similar properties in both materials, including the ability of its antifungal activity [26 - 29]. Tricalcium silicate-WPC also has the same content as MTA [30, 31]. The difference between the two materials lies in the content of Bi₂O₃ [16, 18, 20]. Bi₂O₃ is a radiopacifier that can increase radiopacity so that it can be seen radiographically [20, 21]. In this study, Bi₂O₃ was added to Tricalcium silicate-WPC by 20% according to the amount of Bi₂O₃ in the MTA. According to Marina *et al.* (2014) and Paulo (2012), the addition of Bi₂O₃ to Portland cement has been investigated as a function of a radiopacifier and does not affect pH and the antimicrobial activity which are owned by Portland cement [22, 24]. Guerreiro (2012) also adds the radiopacifiers in Portland cement, which do not change their properties [25].

XRF characterization analysis on tricalcium silicate-WPC added Bi₂O₃ showed some differences in mineral composition and concentration. The amount of calcium present in tricalcium silicate-WPC added Bi₂O₃ is higher than MTA, thus maximizing the release of hydroxyl ions obtained when hydration reaction and affect *C. albicans*. The metal elements are also found in both samples, such as iron (Fe), Magnesium (Mg), Titanium (Ti), Chrom (Cr) and Strontium (Sr) with different concentrations. Tricalcium silicate-WPC added Bi₂O₃ has a lower iron (Fe) than MTA, minimizing the possibility of staining and toxicity. Iron is one of the heavy metal elements and has an intense color [25, 31, 32]. Tricalcium silicate-WPC added Bi₂O₃ has magnesium and aluminum higher compared to MTA. Magnesium (Mg) above 6% causes expansion of the material and reduces the risk of shrinkage and a gap formation after setting. Aluminum (Al) affects the setting time of the material. The aluminum found in the Tricalcium silicate-WPC added Bi₂O₃ is higher than the MTA; this showed that the Tricalcium silicate-WPC added Bi₂O₃ has a longer setting time than MTA. MTA has less aluminum and more iron (Fe). A decrease in setting time can be achieved by adding iron (Fe) and calcium chloride (CaCl) [14, 19, 36]. Zirconium (Zr) is found only in the Tricalcium silicate-WPC added Bi₂O₃ and functions as a radioopacifier [32 - 36].

Dicalcium silicate and Tricalcium silicate contained in Tricalcium silicate-WPC when reacted with water (H₂O) then

form calcium silicate hydrate ($\text{CaO} \cdot 2\text{SiO}_2 \cdot 3\text{H}_2\text{O}$) and calcium hydroxide ($\text{Ca}(\text{OH})_2$). Calcium hydroxide will break down into calcium ions (Ca^{2+}) and hydroxyl ions (OH^-). Hydroxyl (OH^-) are active free radicals that can increase the pH level to 12.9 and affect inhibiting the growth of microorganisms [30, 31]. Jafari *et al.*, stated that MTA's antifungal activity comes from Alkaline pH and inhibit the growth of *C. albicans* [12]. Bhavana *et al.*, also stated that MTA contains calcium oxide, and when in contact with water, it will form calcium hydroxide and increase the pH up from 10.2 to 12.5 within 3 hours [37].

The ability of hydroxyl ions (OH^-) inhibits microorganisms' growth through three stages, damaging the cytoplasmic membrane by inhibiting the synthesis of ergosterol found in fungi cell membranes, breaking the DNA chain, and inhibits the process of replication, and causes protein denaturation [38]. Hydroxyl ions are free radicals that can diffuse into the dentinal tubules and cause lethal effects on microorganisms [22, 23, 30, 32, 33]. *C. albicans* can live in the root canal with an optimal pH of 4.5-8. Environmental pH conditions that rise to alkaline can affect the cell's pH so that pH changes disrupted the activity of ergosterol synthesis enzymes [39, 40]. Hydroxyl ions cause protein denaturation in *C. albicans* cells. Optimal enzyme activity occurs at controlled pH. Alkalinity induces disrupted ionic bonds, which maintains the protein structure's stability and causes loss of biological activity in enzymes and disruption of cell metabolism [39, 40]. Hydroxyl ions also affected the DNA chain of *C. albicans* cells. Disrupted DNA chain causes inhibition of the replication of *C. albicans* cells so that the microorganism can not reproduce itself [39, 40].

CONCLUSION

The mixture of Bi_2O_3 with tricalcium silicate-WPC could be done through a simple solution method, and there was no statistically significant difference ($p > 0.05$) in the effectiveness of the antifungal activity. In other words, the tricalcium silicate-WPC added Bi_2O_3 , and ProRoot MTA had similar efficacy against the *C. albicans*.

ETHICS APPROVAL AND CONSENT TO PARTICIPATE

Not applicable.

HUMAN AND ANIMAL RIGHTS

No animals/humans were used for studies that are base on this research.

CONSENT FOR PUBLICATION

Not applicable.

AVAILABILITY OF DATA AND MATERIALS

The data sets analyzed during the current study are available from the corresponding author [A.C] on request.

FUNDING

This research supported and funded by Universitas Padjadjaran with the grant number of 1427/UN6.3.1/LT/2020.

CONFLICT OF INTEREST

The authors declare no conflict of interest, financial or otherwise.

ACKNOWLEDGEMENTS

The authors would like to express special appreciation and thanks to Finders Centre of Excellence, Universitas Padjadjaran, and Integrated Laboratory of Faculty of Dentistry, Universitas Padjadjaran, Bandung, Indonesia.

REFERENCES

- [1] Hargreaves KM. Berman, LH Cohen's Pathway of the Pulp. 11th ed. St. Louis, Missouri: Elsevier 2016.
- [2] Torabinejad M. Walton, RE Endodontic: Principles and Practice. 5th ed. St. Louis, Missouri: Elsevier 2015.
- [3] Rahimi S, Janani M, Lotfi M, *et al.* A review of antibacterial agents in endodontic treatment. Iran Endod J 2014; 9(3): 161-8. [PMID: 25031587]
- [4] Garg N. Textbook of Endodontics. 3rd Ed. London: Jaypee Brothers medical publisher 2014. [http://dx.doi.org/10.5005/jp/books/12108]
- [5] Chong SB. Hartys: Endodontics in Clinical Practice. 6th ed. St. Louis, Missouri: Elsevier 2010.
- [6] Neelakantan P, Romero M, Vera J, *et al.* Biofilms in endodontics-current status and future directions. Int J Mol Sci 2017; 18(8): 17-48. [http://dx.doi.org/10.3390/ijms18081748] [PMID: 28800075]
- [7] Ghogre P. Endodontic mycology: A new perspective of root canal infection. research and reviews. J Dent Sci 2014; 2(1): 43-50.
- [8] Fouad AF. Endodontic Microbiology. USA: Wiley Blackwell. Avenue 2009.
- [9] Poptani B, Sharaff M, Archana G, Parekh V. Detection of *Enterococcus faecalis* and *Candida albicans* in previously root-filled teeth in a population of Gujarat with polymerase chain reaction. Contemp Clin Dent 2013; 4(1): 62-6. [http://dx.doi.org/10.4103/0976-237X.111622] [PMID: 23853454]
- [10] Viola NV, Filho MT, Cerri PS. MTA versus portland cement: A review of literature. South-Brazilian J Dent 2011; 8(4): 446-52.
- [11] Prasad K, Chitra NT. Mineral trioxide aggregate in endodontics. Int J App Dent Sci 2017; 3(1): 71-5.
- [12] Jafari F, Jafari S. Composition and physicochemical properties of calcium silicate based sealers: A review article. J Operat Dent End 2017; 9(10): 1249-55. [http://dx.doi.org/10.4317/jced.54103]
- [13] Chen C, Hsieh SC, Teng NC, *et al.* Radiopacity and cytotoxicity of Portland cement containing zirconia doped bismuth oxide radiopacifiers. J Endod 2014; 40(2): 251-4. [http://dx.doi.org/10.1016/j.joen.2013.07.006] [PMID: 24461413]
- [14] Ozcan E, Yula E, Arslanoğlu Z, Inci M. Antifungal activity of several root canal sealers against *Candida albicans*. Acta Odontol Scand 2013; 71(6): 1481-5. [http://dx.doi.org/10.3109/00016357.2013.771405] [PMID: 24180589]
- [15] Camilleri J. Mineral trioxide aggregate: Present and future development. Endod Topics 2015; 32(10): 31-46. [http://dx.doi.org/10.1111/etp.12073]
- [16] Raghavendra SS, Jadhav GR, Gathani KM, Kotadia P. Bioceramic in endodontics – A review. J Istanbul Univ Fac Dent 2017; 51(3): 128-37.
- [17] Al-Haddad A, Che Ab Aziz ZA. Bioceramic-based root canal sealers: A review. Int J Biomater 2016; 20169753210 [http://dx.doi.org/10.1155/2016/9753210] [PMID: 27242904]
- [18] Kaur M, Singh H, Dhillon JS, Batra M, Saini M. MTA versus biodentine: Review of literature with a comparative analysis. J Clin Diagn Res 2017; 11(8): ZG01-5. [http://dx.doi.org/10.7860/JCDR/2017/25840.10374] [PMID: 28969295]
- [19] Macwan C, Despande A. Mineral Trioxide Aggregate (MTA) in dentistry: A review of literature. J Res Review 2014; 8(1): 71-4. [http://dx.doi.org/10.4103/2249-4987.152914]
- [20] Hasan Zarrabi M, Javidi M, Naderinasab M, Gharechahi M. Comparative evaluation of antimicrobial activity of three cements: New endodontic cement (NEC), mineral trioxide aggregate (MTA) and Portland. J Oral Sci 2009; 51(3): 437-42.

- [21] Henrique Borges A, Aguirre Guedes O, Evaristo Ricci Volpato L, *et al.* Physicochemical Properties of MTA and Portland Cement after Addition of Aloe Vera. *Iran Endod J* 2017; 12(3): 312-7. [PMID: 28808457] [http://dx.doi.org/10.2334/josnusd.51.437] [PMID: 19776512]
- [22] Khan S, Kaleem M, Fareed MA, *et al.* Chemical and morphological characteristics of mineral trioxide aggregate and Portland cements. *Dent Mater J* 2016; 35(1): 112-7. [http://dx.doi.org/10.4012/dmj.2015-117] [PMID: 26830831]
- [23] Kim RJ, Kim MO, Lee KS, Lee DY, Shin JH. An in vitro evaluation of the antibacterial properties of three mineral trioxide aggregate (MTA) against five oral bacteria. *Arch Oral Biol* 2015; 60(10): 1497-502. [http://dx.doi.org/10.1016/j.archoralbio.2015.07.014] [PMID: 26263538]
- [24] Ravi KS, Vanka A, Shashikiran ND. Portland Cement: A Building of Evidence for Clinical Use. *Int J Dent Clin* 2011; 3(1): 52-5.
- [25] Primathena I, Nurdin D, Adang RAF, Cahyanto A. Composition and Functional Groups Evaluation of Tricalcium silicate Grey Portland Cements ad Material for Dental Application. *Key Eng Mater* 2018; 782: 256-61. [http://dx.doi.org/10.4028/www.scientific.net/KEM.782.256]
- [26] Camilleri J. Will Bioceramic be the Future Root Canal Filling Materials. *Curr Oral Health Rep* 2017; 10(7): 1-11. [http://dx.doi.org/10.1007/s40496-017-0147-x]
- [27] Ha WN, Nicholson T, Kahler B, Walsh LJ. Mineral Trioxide Aggregate-A Review of Properties and Testing Methodologies. *Materials (Basel)* 2017; 10(11): 1-18. [http://dx.doi.org/10.3390/ma10111261] [PMID: 29099082]
- [28] Siboni F, Taddei P, Prati C, Gandolfi MG. Properties of NeoMTA Plus and MTA Plus cements for endodontics. *Int Endod J* 2017; 50(1)(Suppl. 2): e83-94. [http://dx.doi.org/10.1111/iej.12787] [PMID: 28452115]
- [29] Jitaru S, Hodisan I, Timis L, Lucian A, Bud M. The use of bioceramics in endodontics –literature review. *J Dent Med* 2015; 10(1): 1-4.
- [30] Guerreiro JM, Cornelio AL, Andolfatto C, Salles LP, Filho MT. pH and antimicrobial activity of portland cement associated with different radopacifying agents. *International Scholarly Research Network* 2012; 54(02): 1-5.
- [31] Chang SW. Chemical composition and porosity characteristics of various calcium silicate-based endodontic cements. *Bioinorg Chem Appl* 2018; 2018(1):2784632 [http://dx.doi.org/10.1155/2018/2784632] [PMID: 29487618]
- [32] Oyedotun T, Temitope D. X-ray fluorescence (XRF) in the investigation of the composition of earth materials: A review and an overview. *Geology, Ecology, and Landscape Open Access* 2018; 10(1): 1-8. [http://dx.doi.org/10.1080/24749508.2018.1452459]
- [33] Marciano MA, Garcia RB, Cavenago BC, *et al.* Influence of bismuth oxide concentration on the pH level and biocompatibility of white Portland cement. *J Appl Oral Sci* 2014; 22(4): 268-73. [http://dx.doi.org/10.1590/1678-775720130059] [PMID: 25141197]
- [34] Chaurasiya S, Yadav Gunjan, Gripathi AM, Dhinsa K. Endodontic failures and its management: A review. *Int J Oral Health Med Res* 2016; 2(5): 144-8.
- [35] Prada H, Munoz PM, Luesme TG, Martinez Pm, Castellano NC, Saiz AM. Influence of Microbiology on Endodontic Failure: Literature Review. *Journal of Oral Medicine and Pathology* 2019; 24(3): 364-72. [http://dx.doi.org/10.4317/medoral.22907]
- [36] Rahman H, Chandra R, Chowdhary D, Singh S, Tripathi S, Anwar SZ. Antimicrobial activity of mta fillapex, real seal se, acreoseal, and zinc oxide eugenol sealers against *Enterococcus faecalis* and *Candida albicans*. *J Dent Med Sci* 2017; 6(1): 66-9. [http://dx.doi.org/10.9790/0853-1601046669]
- [37] Bhavana V, Chaitanya KP, Gandhi P, Patil J, Dola B, Reddy RB. Evaluation of antibacterial and antifungal activity of new calcium-based cement (Biodentine) compared to MTA and glass ionomer cement. *J Conserv Dent* 2015; 18(1): 44-6. [http://dx.doi.org/10.4103/0972-0707.148892] [PMID: 25657526]
- [38] Tanomaru-Filho M, Tanomaru JMG, Barros DB, Watanabe E, Ito IY. In vitro antimicrobial activity of endodontic sealers, MTA-based cements and Portland cement. *J Oral Sci* 2007; 49(1): 41-5. [http://dx.doi.org/10.2334/josnusd.49.41] [PMID: 17429181]
- [39] Hameed AR, Ali SM, Ahmed L. Biological study of *Candida* species and virulence factor. *Int J of Adv Res Eng Tech* 2018; 1(4): 8-16.
- [40] Cavalheiro M, Teixeira MC. *Candida* biofilms: Threats, challenges, and promising strategies. *Front Med (Lausanne)* 2018; 5(28): 28. [http://dx.doi.org/10.3389/fmed.2018.00028] [PMID: 29487851]

